

## How to install Dual Flush Valve for 2-piece toilet?

Published 03/03/2017 11:46 AM | Updated 08/18/2022 08:26 PM

This article will explain how to remove and replace a flush valve from a dual flush toilet tank of a two-piece toilet.

Please note that the images are for reference only. The product shown in this article may differ from yours, but the information below is still relevant.

If the Flush Valve Base is **NOT** damaged or there is **NO** leak between tank and bowl, then you can install the Flush Valve body **ONLY**.

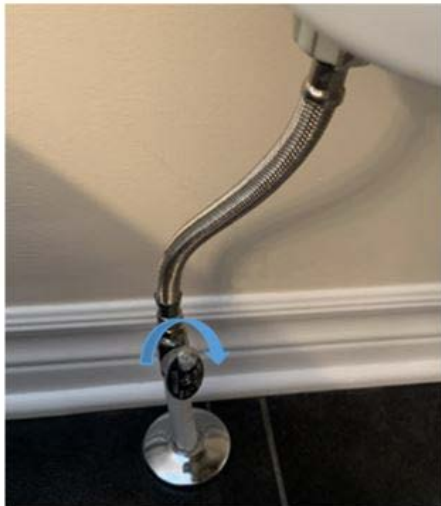
Follow one of the two instructions to remove and replace the dual flush valve component:

- [To install \*\*ONLY\*\* the Flush Valve body \(the mechanism without the base\)](#)
  1. Close the shut-off valve and drain out the water in tank
  2. Disconnect and remove the existing flush valve body canister
  3. Replace with the new flush valve body canister
  4. Refill the tank and test for leak and for flushing function
- [To Install the \*\*ENTIRE\*\* Dual Flush Valve \(both the mechanism and its base\)](#)
  1. Close the shut-off valve and drain out the water in tank
  2. Disconnect the refill tube and remove the existing flush valve body canister
  3. Disconnect the water supply line from the tank and remove the tank from the bowl
  4. Remove the flush valve base from the tank
  5. Install the new flush valve base to the tank
  6. Reinstall the tank to bowl and reconnect the water supply line to the tank fill valve
  7. Reinstall the flush valve body canister and reattach the refill tube
  8. Refill the tank and test for leak and for flushing function

### **To install Only the Flush Valve body (Mechanism without the base):**

**Step 1** - Close the shut-off valve and drain out the water in tank

- Turn off the water supply by turning the shut-off valve clockwise

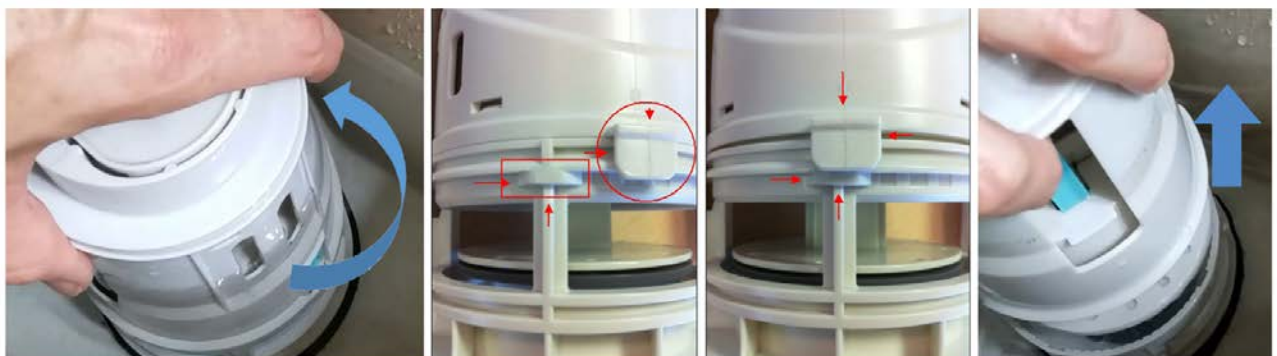


- Drain as much water out as possible by press down the push button until water within the toilet tank is flushed out completely. Lift the tank cover and use a sponge or a cloth to drain out remaining water in tank.



## Step 2 - Disconnect and remove the existing flush valve body canister

- Remove the existing dual flush valve body canister by rotating it counter-clockwise to unlock it from the flush valve base. Then lift up the existing dual flush valve body canister.



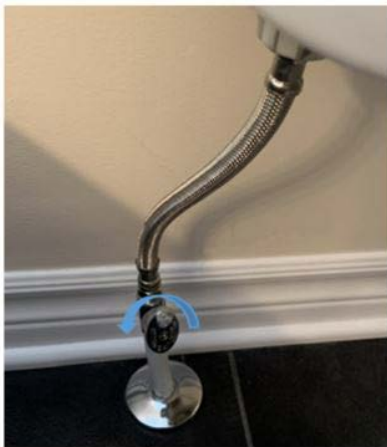
### Step 3 - Replace with the new flush valve body canister

- Insert the new flush valve body canister into the base and rotate the flush valve body canister clockwise to lock it into place.



### Step 4 - Refill the tank and test for leak and for flushing function

- Reopen water by turning the shut-off valve counter-clockwise to refill the tank.



- When the tank is refilled, verify if the water is filled to the level at the marked water line at the back wall of the tank. Adjust water level if needed by turning the water level adjustment on the fill valve to move the float cup up or down to increase or reduce the water level in tank.



- Press the push button down to activate the full flushing cycle. Verify if toilet flush and refill without issue and the flush valve canister flapper seals well when the flushing cycle completed.



- Check for any leakage at fittings. Retighten or reconnect as needed.

[Return to Top](#)

**If the flush valve base is damaged or there is a leak between tank and bowl, then you will need to install the entire flush valve (both the mechanism and its base)**

**To Install the ENTIRE Dual Flush Valve (both the mechanism and its base)**

**Complete Flush Valve  
(Body canister and base)**



**Flush Valve Base Only**



**Step 1 - Close the shut-off valve and drain out the water in tank**

- Turn off the water supply by turning the shut-off valve clockwise



- Drain as much water out as possible by press down the push button until water within the toilet tank is flushed out completely. Lift the tank cover and use a sponge or a cloth to drain out remaining water in tank.

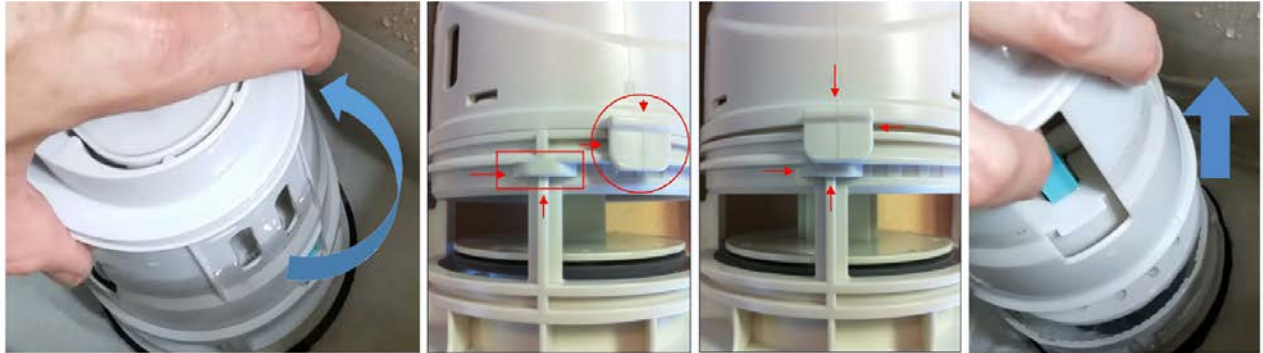


**Step 2 - Disconnect the refill tube and remove the existing flush valve body canister**

- Remove the refill tube from flush valve overflow tube



- Remove the existing dual flush valve body canister by rotating it counter-clockwise to unlock it from the flush valve base. Then lift up the existing dual flush valve body canister.



**Step 3 - Disconnect the water supply line from the tank and remove the tank from the bowl**

- Disconnect the water supply line from the tank.



- Underneath the tank, unscrew the bolts that hold the tank to the bowl. You may need to spray them with some penetrating oil first before trying to loosen them. Remove the tank lock nuts from under the bowl rims. Reach in the tank with a long slotted screwdriver to keep tank bolts from turning while loosening nuts under the tank with an adjustable wrench. Remove tank bolts.





- Lift the tank off of the bowl and set it aside on a towel.



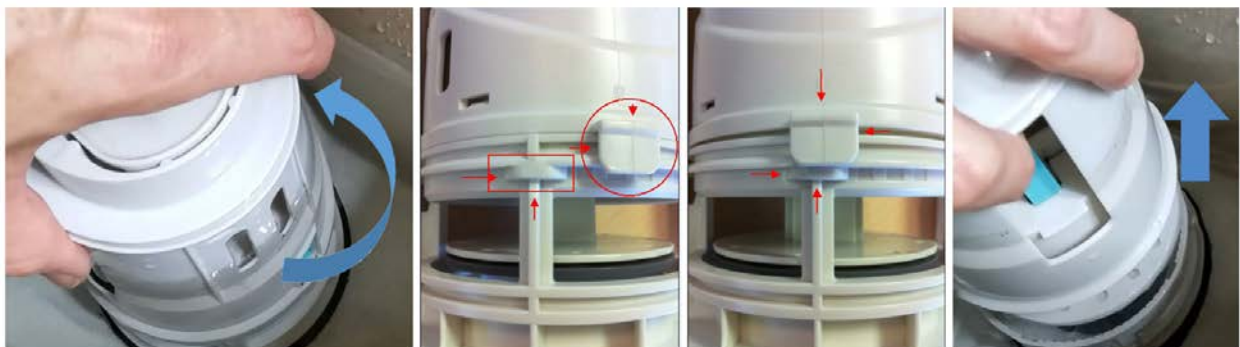
#### Step 4 - Remove the flush valve base from the tank

- From the underside of the tank, unscrew the lock nut holding the flush valve to the tank using a plumber's wrench. Then remove the flush valve base from the tank.



#### Step 5 - Install the new flush valve base to the tank

- Separate the dual flush valve body canister from the dual flush valve base first by holding and rotating the dual flush valve body canister counter-clockwise. Once unlocked from the flush valve base, lift up the dual flush valve body canister.



- Install the new flush valve base to the tank from the underside of the tank by tightening the lock nut. Use a plumber's wrench to help retighten the lock nut.



- Reinstall the tank-to-bowl gasket



**Step 6 - Reinstall the tank to bowl and reconnect the water supply line to the tank fill valve**

- Carefully replace the tank back onto the bowl.





- Reattach the tank to the bowl with the tank bolts.



- Reconnect the water supply line to the tank



### **Step 7 - Reinstall the flush valve body canister and reattach the refill tube**

- Insert the new flush valve body canister into the base and rotate the flush valve body canister clockwise to lock it into place.

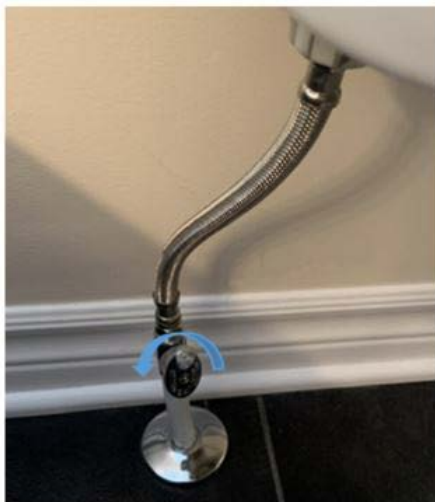


- Reattach the refill tube to the flush valve overflow tube.



**Step 8 - Refill the tank and test for leak and for flushing function**

- Reopen water by turning the shut-off valve counter-clockwise to refill the tank.



- When the tank is refilled, verify if the water is filled to the level at the marked water line at the back wall of the tank. Adjust water level if needed by turning the water level adjustment on the fill valve to move the float cup up or down to increase or reduce the water level in tank.



- Press the push button down to activate the full flushing cycle. Verify if toilet flush and refill without issue and the flush valve canister flapper seals well when the flushing cycle completed.



- Check for any leakage at fittings. Retighten or reconnect as needed.

[Return to Top](#)